

DSV SERIES SOLENOID VALVE



www.allaqua.net

Type:	DSV—Direct Acting Solenoid Valve
Working Principle:	Direct Acting or Semi Direct Lift
Version:	Normally Closed (C) or Normally Open (O)
Body Material:	304 Stainless Steel (S) or Brass (B)
Seal Material:	NBR (to 80°C) (N) EPDM (to 120°C) (E) FKM (to 150°C) (V)
Working Pressure:	0-10 Bar
Power:	230VAC, 110VAC, 24VDC, 12VDC (8W)
Protection Class:	IP65
Medium:	Gas, Water, Oil < 20 centistokes



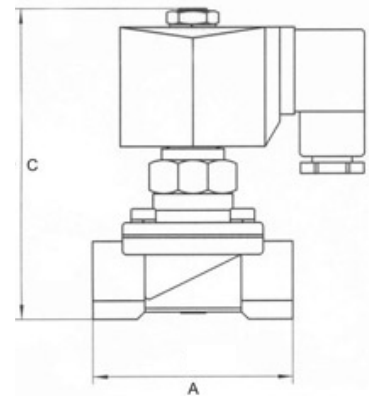
Stainless Steel



Brass

TECHNICAL PARAMETERS:

Model	Thread	Cv	Action	A	B	C	C
DSV3	G1/8"	0.3	Direct Acting	40	26	66	85
DSV6	G1/4"	0.8		40	26	66	85
DSV10	G3/8"	4.6	Semi Direct Lift	65	47	93	116
DSV15	G1/2"	4.6		65	47	93	116
DSV20	G3/4"	8.5		72	54	100	123
DSV25	G1"	12		90	70	108	131
DSV32	G1 1/4"	26		120	90	131	175
DSV40	G1 1/2"	26		120	90	131	175
DSV50	G2"	48		150	112	146	190



ORDER CODE EXAMPLE:

DSV20SEC-230

Type	Size	Body	Diaphragm	Version	Voltage
DSV	20mm	Stainless Steel 304	EPDM	Normally Closed	230VAC